



Sherborne Close

Colnbrook, Slough, SL3 0PB

£795

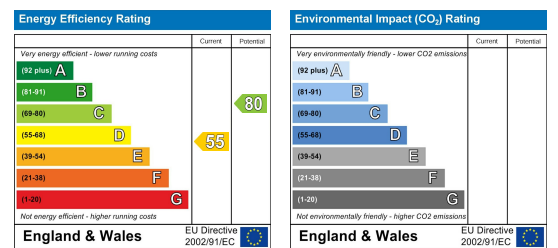


Floor Plan

Area Map



Energy Efficiency Graph



Viewing

Please contact us on 0203 005 2850 if you wish to arrange a viewing appointment for this property or require further information.

- Newly developed HMO Rooms
- Fully furnished
- TV - Wifi inclusive
- Kitchen prep areas inclusive of fridge
- Shared Communal kitchen
- Secured Intercom system
- Immaculate condition
- Excellent transport links
- Close to local amenities



Modern En-Suite Rooms with Kitchenettes | All Bills Included (Except Electric)
Colnbrook Village | Easy Access to Heathrow & Elizabeth Line

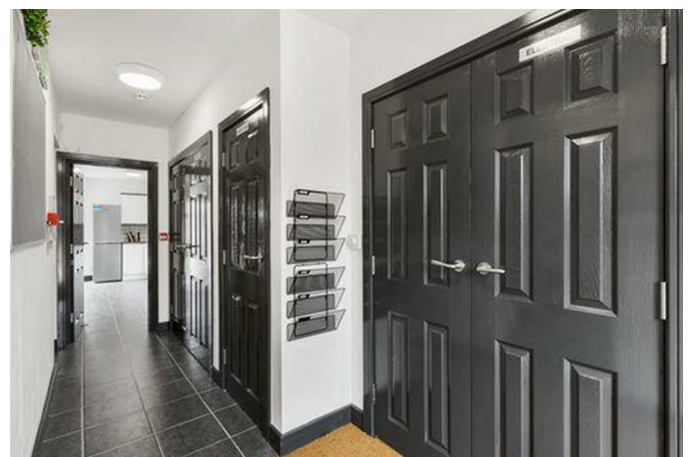
We're pleased to offer this newly developed HMO located in a quiet cul-de-sac in Colnbrook Village, within close proximity to the Elizabeth Line, Heathrow Airport, motorway links, local schools, and village shops.

Each room is fully furnished and includes:

- Private en-suite bathroom
- Kitchenette/prep area within the room
- TV and WiFi included
- Electric heating & double glazing
- Intercom system and secure entry
- Access to modern communal kitchen and utility area with CCTV

Rent includes: Council Tax, Gas, Water, WiFi
Electricity is on a top-up basis (tenant responsibility)

Ideal for professionals looking for modern, self-contained living with excellent local and transport links.



These particulars, whilst believed to be accurate are set out as a general outline only for guidance and do not constitute any part of an offer or contract. Intending purchasers should not rely on them as statements of representation of fact, but must satisfy themselves by inspection or otherwise as to their accuracy. No person in this firm's employment has the authority to make or give any representation or warranty in respect of the property.

Unit 6 Hounslow Business Park, Alice Way, Hounslow, Middlesex, TW3 3UD
0203 005 2850 info@redroofonline.com www.redroofonline.com