



Sherborne Close

, Colnbrook, SL3 0PB

£795

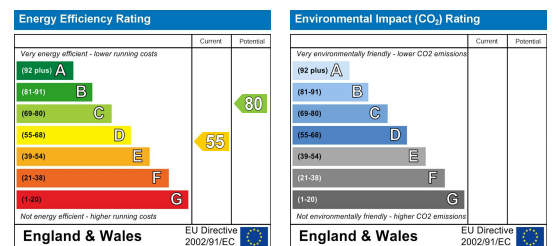


Floor Plan

Area Map



Energy Efficiency Graph



Viewing

Please contact us on 0203 005 2850 if you wish to arrange a viewing appointment for this property or require further information.

- Fully furnished Double Bedroom
- Each room has its own fridge and kitchen prep area
- Communal Garden
- Quiet residential Cul de Sac
- Ideal for single professionals and couples
- Modern Shared Communal Kitchen
- Wifi and Intercom System inclusive
- Rents includes all bill except electricity
- Excellent Transport Links
- Available Immediately

A bright and spacious room is available in a well-maintained shared property, ideally located in the charming village of Colnbrook.

The property is offered in excellent condition.

Benefits include:- Fully furnished - Electric Heating and Double glazed throughout;

Entrance hall CCTV with Utility area. A secured intercom in each room. TV with Wifi. Brand New En-suite with WC. A modern contemporary kitchen.

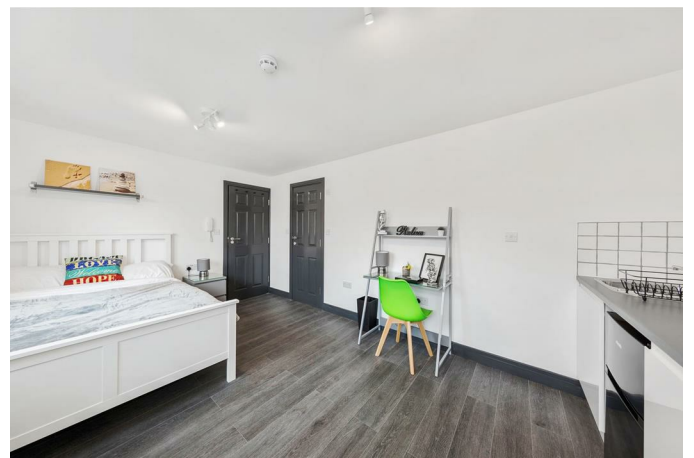
Council tax, gas and water bills inclusive of rent.

Electric top up is tenant's responsibility;

Approximately 10 minutes by bus to Terminal 5 Tube Station.

Situated within easy reach to the M4 & M25 junctions, Heathrow Airport and within catchments of local Primary and Grammar Schools.

Don't miss the chance to make this welcoming property your next home. Enquire today to arrange a viewing!



These particulars, whilst believed to be accurate are set out as a general outline only for guidance and do not constitute any part of an offer or contract. Intending purchasers should not rely on them as statements of representation of fact, but must satisfy themselves by inspection or otherwise as to their accuracy. No person in this firm's employment has the authority to make or give any representation or warranty in respect of the property.

Unit 6 Hounslow Business Park, Alice Way, Hounslow, Middlesex, TW3 3UD
0203 005 2850 info@redroofonline.com www.redroofonline.com